

SUPPLYING FILES TO MAINSTREAM PRINT



Mainstream Print Ltd | 31 Coleshill St, Sutton Coldfield B72 1SD

E: enquiries@mainstreamprint.co.uk | T: 0121 355 0518 | W: www.mainstreamprint.co.uk



How to supply Print Ready PDF files to Micropress

PDF's are the standard file format for transmitting files for print but it is important to prepare your PDF file in the correct way for us to process.

Creating a PDF in Adobe Indesign

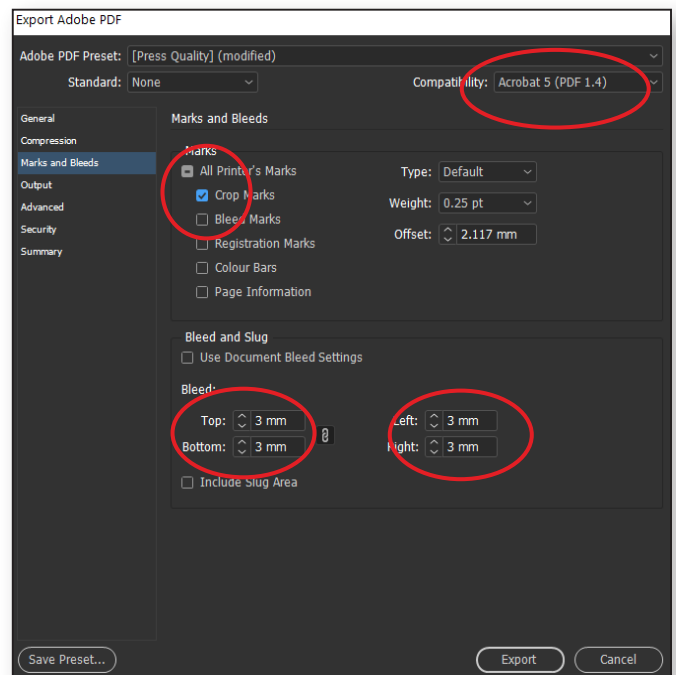
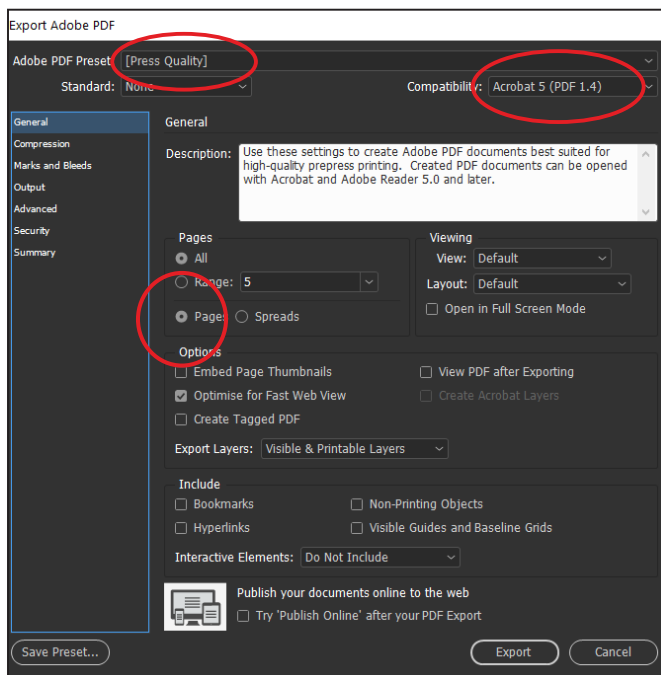
Select File > Adobe Preset > **Press Quality**.

Single **Pages** (see image below)

Ensure PDF version is Acrobat 5 (PDF 1.4)

Click the Marks and Bleeds tab.

Select **Crop Marks** and add **3mm Bleed on all edges** (see image below)



Creating a PDF in Acrobat Distiller

Ensure a 300dpi **PDFx1a print** or **Press Ready** PDF is output.

Please include 3mm bleed, crop marks and supply as **single pages**.

Choose high resolution.

Compression settings for colour and grey scale images should be down sampled to 300dpi with auto compression set to high.

Bitmap (monochrome: i.e. line art) images should be set at 600dpi.

Font embedding should be set to **embed all fonts**.

There are a multitude of programs that can provide a Print Ready PDF.

The main points to consider are that **fonts** are either **outlined** or **embedded**, there is **3mm Bleed** on all edges and the file contains **crop marks**. Quality should be set at 300dpi for colour and grey scale images, 600dpi or above for bitmap images.

We prefer files supplied as **one contiguous document as single pages** with Page 1 being the front cover. Please try to avoid outputting PDF files as spreads. Our PDF rip has to split files supplied as spreads in half before processing, so as such can not really be considered as a Print Ready files.

How to make the correct artwork adjustments for PUR bound jobs when there are images or text that cross over page spreads.

A PUR bound book can never be opened flat without breaking the book apart and the pages falling out, so to create the illusion of an image or text that is continuous across the spine, adjustment is necessary.

It is normally best to avoid having the focus of your image directly on or near the spine of a perfect bound book. The alignment of your read-across image is much less obvious if your eye isn't drawn to it.

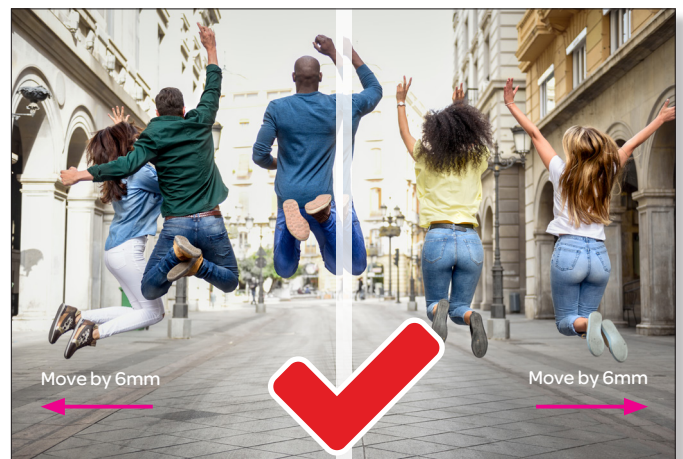
However, if your design dictates a read-across image or text we advise **allowing 6mm on the Inside Front Cover and 6mm on the first page of text** - as shown in the images below. This will look quite strange to a designers eye, but it will ensure your artwork aligns more successfully.

If you have read-across pages within your text the same rules apply but please only move each page by **3mm**.

Please be aware that with PUR binding the cover is drawn to the text by force and glued in place, then three edges are trimmed. This manufacturing process does have slight movement variance so any artwork with read-across pages will never be as perfect as a flat piece of print.



No allowance



6mm allowance

If your book is very bulky, or has a heavy weight cover please call us for further advice 0121 355 0518